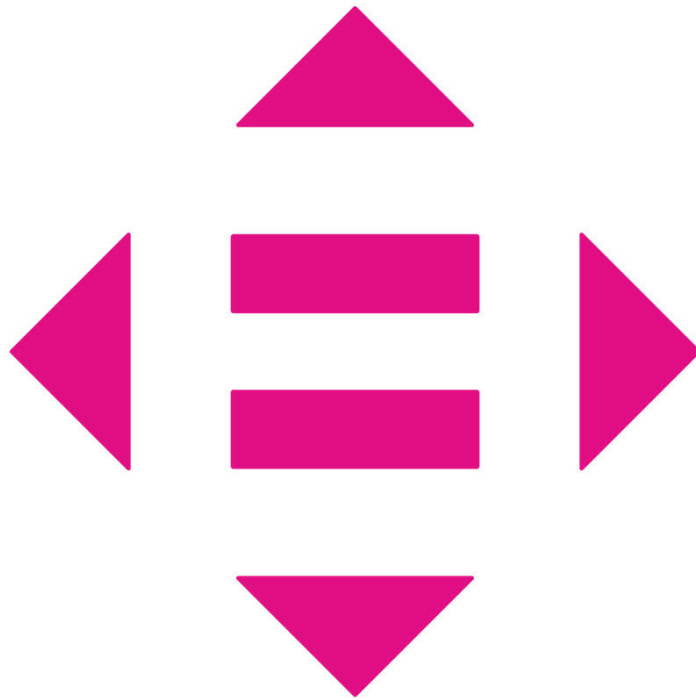


# 10 REDUCED INEQUALITIES



## BAU AT A GLANCE

---

Since its foundation in 1998, the vision of BAU has been to be a global university known for its contribution to scientific, technological, and cultural knowledge through innovative education models and research approaches that reflect international standards as well as service to society. Currently, BAU Global Network comprises of 6 universities (Istanbul, Washington D.C., Berlin, Cyprus, Batumi, Plymouth), 5 liaison offices (BAU Global Azerbaijan, Jordan, Uzbekistan, Mongolia, Pakistan) and 5 language schools.

As one of the leading universities in Türkiye, BAU aims primarily to improve the living standards of the local and global society by integrating the sustainable development goals into its corporate processes and culture, educational programs, academic research practices and stakeholder collaborations. BAU with its staff members, students and alumni is a big academic community who are raised as good global citizens committed to each other and the world around them and always act with the utmost sense of ethics and social responsibility.

## BAU WITH NUMBERS

---

- 7 campuses in Istanbul
- 10 faculties, 1 conservatory, 2 vocational schools
- 40 BA programs, 153 MA programs, 24 PhD. programs
- 22 research and application centers
- 150 labs, workshops/studios, incubation centers
- 223 Erasmus partner universities, 92 world exchange partners
- 805 full-time faculty members, 526 administrative staff members
- 19.595 undergraduate students, 5.503 graduate students, 1.306 associate degree students
- 79 student clubs
- 224 externally funded projects between 2020-2022
- 340 industry partnerships & projects between 2020-2022

## BAU IN THE TIMES HIGHER EDUCATION



BAU participates in the Times Higher Education (THE) Impact Rankings since 2019. According to the current rankings, BAU belongs to the **601-800 band in the World University Rankings**, the **401-600 band in the Impact Rankings** and the **251-300 band in the Young University Rankings**. Also, BAU is ranked among the **top 5 universities in Türkiye**.

The university continuously increases its standing in categories related to the UN Sustainable Development Goals. As of 2022, BAU holds the following standings in the THE Impact Rankings;

- Ranks between 101-200 in Industry Innovation, Infrastructure
- Ranks between 201-300 in Gender Equality
- Ranks between 301-400 in Reducing Inequalities
- Ranks between 301-400 in Peace, Justice and Strong Institutions
- Ranks between 301-400 in Sustainable Cities and Communities

The University takes the above-mentioned rankings as evaluation criteria for progress regarding its adherence and contribution to the UN Sustainable Development Goals and will continue to report its advancement in the rankings on a yearly basis.

## REDUCED INEQUALITIES

---

BAU carries out research projects through different units established to achieve its aim of reducing inequality within and among countries, and organizes trainings open to the public. Directing the process by establishing partnerships with both local and national government and non-governmental organizations in this field is an important priority for BAU.

### **Discrimination Policy**

The Discrimination Policy of BAU aims to provide a secure and healthy education and work environment for every member of our University without any discrimination against race, religion, disability, or gender. BAU has the responsibility to act accordingly to the Article 10 of The Constitution of the Republic of Turkey: "Everyone is equal before the law without distinction as to language, race, color, sex, political opinion, philosophical belief, religion, and sector or any such grounds." Every individual's rights are recognized without discrimination against race, religion, language, nationality, age, disability state, sexual orientation, and sexual identity.

### **Harassment Policy**

The harassment Policy of BAU promises a life and a studying and learning environment that is free from harassment, where individuals can be healthy and feel safe. Harassment means that an individual is exposed to aggressive and life-threatening behaviors. Harassment and assault are violations of human rights and are criminal offenses

### **BAU Unit for Students with Disability**

The mission of the BAU Unit for Students with Disability is to provide students with different disabilities and needs equal access to learning environments as well as academic resources, activities, and programs. The Unit works to ensure that all aspects of student life are welcoming and inclusive for BAU students with visible or invisible disabilities through academic accommodation, assistive technologies, and adapted classroom activities.

## REDUCED INEQUALITIES

### Human Rights and Freedoms Application and Research Center (Faculty of Law)

The Human Rights and Freedoms Application and Research Center aims to carry out societal awareness activities in the field of human rights and fundamental freedoms, to provide expert opinion on human rights related issues, to prepare amicus curiae (court-friendly expertise) in the field of human rights within the scope of the provisions of the relevant legislation, and to contribute to the scientific knowledge both nationally and internationally.

In the upcoming period, the Center will prioritize two areas of action:

1. The social problems faced by immigrants and refugees, which concern both the global and the local agenda.
2. Violence against women, children and different gender identities.

### • “Asylum Law in Türkiye and International Protection System” Conference (21 December 2021)

The conference was held in a hybrid fashion and the following topics were emphasized: International protection, refugee law and asylum law.

### “Child, Early and Forced Marriages” Webinar (13 April 2021)

The webinar was co-organized by UN Türkiye, CIFAL Istanbul, UNITAR and BAU. It focused on SDG 5 (Gender Equality) and SDG 10 (Reducing Inequalities).

UNITED NATIONS TURKEY  
unicef  
IOM UN MIGRATION  
UNFPA  
UN WOMEN  
UNHCR

**Çocuk Yaşta Erken ve Zorla Evlilikler**

BİRLİKTE MİLLETLER ORTAK PROGRAMI  
Çocuk Yaşta, Erken ve Zorla Evliliklerin Önlenmesi

**Moderatör**  
**Dr. Öğr. Üyesi Ahmet Aydemir**  
CIFAL İstanbul, UNITAR Direktörü

**Konuşmacılar**  
**Özle Koyuncu**  
UNICEF – Çocuk Koruma Sorumlusu

**Emine Kuzutürk Savaş**  
UNFPA – Çocuk Yaşta Erken ve Zorla Evliliklerin Önlenmesi BM Ortak Programı UNFPA  
Proje Yöneticisi

**Duygu Erşeçen**  
UN Women – Çocuk Yaşta Erken ve Zorla Evliliklerin Önlenmesi BM Ortak Programı UN Women  
Türkiye Ofisi Proje koordinatörü

**Prof. Dr. Aslı Makaracı Başak**  
Bahçeşehir Üniversitesi – Hukuk Fakültesi  
Medeni Hukuk Anabilim Dalı Öğretim Üyesi

**Anastasia Sağlam**  
IOM – BM Göç Kuruluşu görevlisi

**Derya Köksal**  
UNHCR – Mülteci Koruma Birimi Müdür Yardımcısı

13 Nisan 2021, Salı • 14.30  
zoom.us/j/93402328257

unitar United Nations Institute for Training and Research  
BAU Bahçeşehir University  
cifal İstanbul

## REDUCED INEQUALITIES

**İNSAN HAKLARI YARGISINA BAKIŞ**  
**REFLECTIONS ON HUMAN RIGHTS JUSTICE**  
3 Mayıs 2021, **Pazartesi** • 21.00 / 3 May 2021, **Monday** • 21.00 (GMT +3)

IGUL, AYAM ve CIFAL Adına Açış Konuşmaları 21.00 Opening Remarks  
IGUL, AYAM and CIFAL

Amerika Birleşik Devletleri'nde İnsan Hakları Yargısı 21.10 Human Rights Justice in the United States of America  
David O. Campbell  
Arizona Federal Bölge Mahkemesi Kademeli Hâkimi  
District of Arizona Senior Federal Judge

Avrupa İnsan Hakları Mahkemesi Uygulamasında İncelikli Prensipli Doç. Dr. Saadet Yüksel 21.30 The Principle of Subsidiarity in the Practice of the European Court of Human Rights  
Doç. Dr. Saadet Yüksel  
European Court of Human Rights Judge

Türkiye'de İnsan Haklarının Kararlarında Bireysel Başvurunun Rolü 21.50 The Role of Individual Application in the Protection of Human Rights in Turkey  
Prof. Dr. Zuhü Arslan  
The President of the Constitutional Court of Turkey

Soru-Cevap ve Değerlendirme 22.10 Question & Answer and Discussion  
Moderator: Prof. Dr. Feridun Yenisey

Kapanış 22.30 Closing

Registration: [kisa.link/OPJV](https://kisa.link/OPJV)

BAU Bahçeşehir University, UNFP, UNITAR United Nations Institute for Training and Research, CIFAL Istanbul

### “Reflections on Human Rights Justice” Webinar (3 May 2021)

The webinar was organized by the Center for Constitutional Justice Studies (AYAM), the Directorate of Global Law Programs (IGUL/BAU) and the United Nations Institute for Education and Research (CIFAL Istanbul/UNITAR). The event focused on SDG 10 (Reduced Inequalities).

### Human Rights and Freedoms Application and Research Center (Faculty of Law)

The Human Rights and Freedoms Application and Research Center aims to carry out societal awareness activities in the field of human rights and fundamental freedoms, to provide expert opinion on human rights related issues, to prepare amicus curiae (court-friendly expertise) in the field of human rights within the scope of the provisions of the relevant legislation, and to contribute to the scientific knowledge both nationally and internationally.

In the upcoming period, the Center will prioritize two areas of action:

1. The social problems faced by immigrants and refugees, which concern both the global and the local agenda.
2. Violence against women, children and different gender identities.

### “Managing Immigration Locally” Seminar (2021)

The seminar was organized as part of the “World Refugee Day” activities, in collaboration with United Nations Population Fund (UNFPA) and BAU CIFAL under the United Nations Institute for Training and Research (UNITAR). The event brought together the representatives of local authorities and NGOs to discuss their role in migration management through their field experiences.

**Yerelde Göçü Yönetmek**  
Prof. Dr. Yavuz Günalay  
Bahçeşehir Üniversitesi İktisadi, İdari ve Sosyal Bilimler Fakültesi Dekanı  
Simten Birsöz İnanç  
İstanbul Büyükşehir Belediyesi Göç Politikaları Koordinatörü  
Nazife Ece Karaduman  
UNFPA Türkiye Program ve Ortaklıklar Sorumlusu  
Doç. Dr. Ulaş Sunata  
BAUMUS Direktörü

UNITAR United Nations Institute for Training and Research, BAU Bahçeşehir University, CIFAL Istanbul

## REDUCED INEQUALITIES

### Number of students with disability

In 2021-2022 Academic Year, Bahçeşehir University has 35 disabled student.

### Provide accessible facilities for people with disabilities.

According to the Disability Law No. 5378 of 1 July 2005, all public spaces, all existing roads, pavements, pedestrian crossings, open and green spaces, sports fields and similar social and cultural infrastructure areas must be accessible.

In order to be an accessible campus, Bahcesehir University has taken some measures. With this aim, Bahçeşehir University provided accessible grounds, facilities and buildings for students, staffs and visitors living with disability.

### FOR DEAF STUDENTS

The student is allowed to sit in a place where he / she can hear the instructor and is not affected by other sounds. If the student is reading lips, the instructor tells the lesson to the student where he or she can read easily.

### FOR PHYSICALLY DISABLED STUDENTS

For the midterm and final exams, a class is chosen in which the student can move freely with a wheelchair. If the classes are not suitable, the students exam iss given by a specialist that working in the Disabled Student Unit. A comfortable seating arrangement is provided for the student. Additional time for the exam is determined and a comfortable exam period is determined.

### FOR STUDENTS WITH WRITING PROBLEMS

The exams are provided with the convenience of being on the computer instead of paper and paper layout or adding additional time to the exam period. Additional time is given for taking notes in the courses. Students with physically disabled are allowed to use a laptop in the classroom when writing is not possible. In case of need, the course notes are prepared in writing and communicated to the student.

### FOR STUDENTS WITH SPEECH PROBLEMS

For the students with speech problems or stuttering problems, special organizations or extra time are given especially for their homework such as speaking exams or presentations. Generally, visual and written presentation method is preferred. This method is decided together with the student.

## REDUCED INEQUALITIES

### FOR STUDENTS WITH DYSLEXIA, ATTENTION DEFICIT AND HYPERACTIVITY PROBLEMS.

It is ensured that they take the exams separately in additional time. They usually receive support to keep their motivation high. Teachers who take courses are warned that it is possible to spelling in exams and assignments. If they are not obliged, they are asked to take seperate examination.

### FOR BLIND STUDENTS

Students are usually given additional time in their exams. Exam materials are enlarged and printed for better visibility. An assistant or instructor is appointed to assist the student for exams. If this requirement cannot be met in the units, a student can be obtained from the voluntary pool of the Disabled Students Unit. Students with low vision are allowed to sit in a place where they can follow the instructor and the board well.

Photo 1: A sensible guide road prepared for disabled people in Kemerburgaz Campus





## REDUCED INEQUALITIES

Photo 2: Floor Guidances With Braille Alphabet

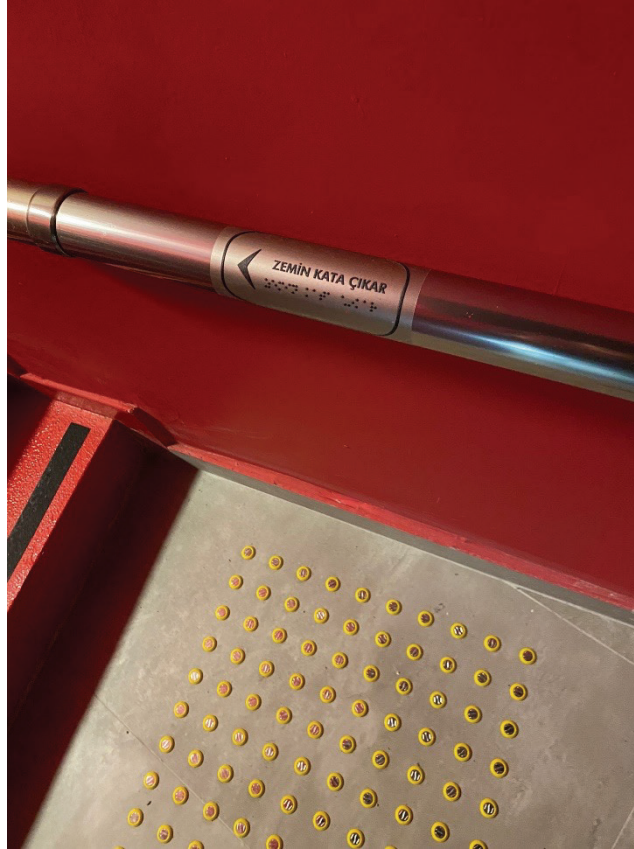
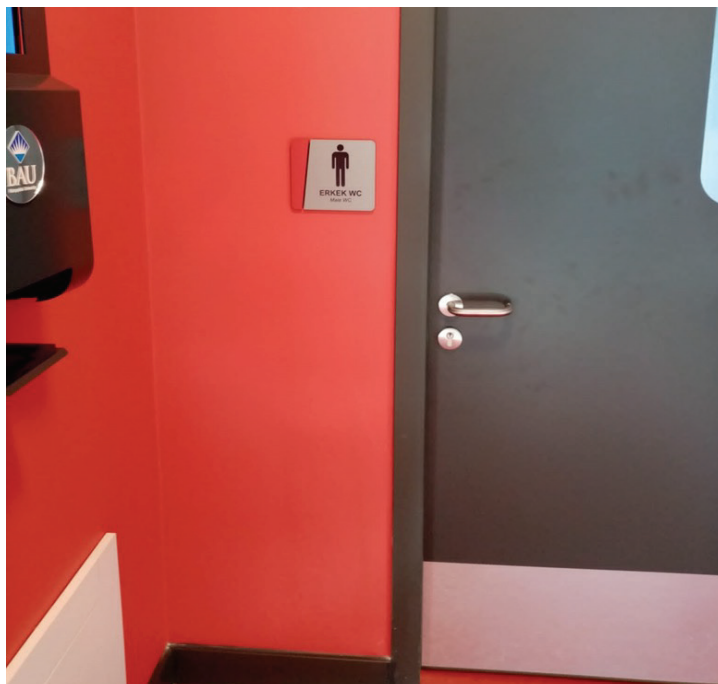


Photo 3: Braille Alphabet And Embossed Signboards



## REDUCED INEQUALITIES

### Disability support services

Provide accessible facilities for people with disabilities.

Bahçeşehir University provide all kind of disabled supports from Disabled Student Unit. In the units office; full time disabled expert and the assistant working for the disabled students. They are helping the disabled students for all kind of academic and physical needs. The demands of students with disabilities varying according to their disability status are determined before the relevant examinations and transmitted to the responsible person of the course.

The regulations regarding the mid-term and final exams of the students with disabilities prepared by the Council of Higher Education were applied exactly. Each student with disabilities is given an additional time in a separate area and exams are conducted in the format required by the disability.

Following the decrease in the Covid epidemic in our country, there has been an increase in the demand for support services from the unit for students with disabilities. Almost every disabled student has completed their exams in a separate room, with additional time. During the entire academic year, 36 midterm exams and 47 final exams were held at the Disabled Student Unit and delivered to the relevant faculties.

Table 1: 2021- 2022 Academic Year Number of Students Receiving Exam Support on Disabled Students Unit

Disabled Student Unit	Fall semester	Spring semester
Number of students who communicated with the Disabled Student Unit and expressed their needs and provided support	35	35
The number of disabled students who did their visa exams in the Disabled Student Unit	17	17
The number of disabled students who did their final exams in the Disabled Student Unit	17	17
The total number of visa exams that made by the Disabled Student Unit	36	36
The total number of final exams that made by the Disabled Student Unit	47	47
Types of disabilities of students receiving exam support in the Disabled Student Unit.	Blind Students, Special Learning Difficulties Dyslexia, Epilepsy, Atypical Autism Attention Deficit Hyperactivity Disorder - Special Learning Disability, Physically Disabled Social Anxiety Disorder	
Requests for students with disabilities who receive exam support in the Disabled Student Unit	For the blind students	Big point (usually 18 – 24)
	For Physically Disabled People	Reader and writer support
	Students with epilepsy, Asperger's, Autism For all disabled people	Additional time
	For all disabled students	Additional time

# REDUCED INEQUALITIES

## Disability support services

Provide access schemes for people with disabilities such as mentoring or other targeted support  
The arrangements made to correctly guide students with disabilities are as follows;

### 1. University Promotion Period:

During the promotion week of universities, candidates with disabilities who are considering studying at our university and their families are interviewed and information about the academic and physical accessibility of our institution is given.

### 2. Prior to University Enrollment:

Upon the application of disabled students who have passed the YKS exam and are at the stage of making a choice, the faculties-vocational schools-institutes of our university are introduced, the physical opportunities are evaluated according to the student's disability, and counseling is given in making their own choice according to the score type.

### 3. University Registration Process:

The unit is introduced to all persons with or without disabilities and their families at a table consisting of the university's registry. Preparations are being completed in order to get information about the preparations from the people who will be prepared so that it can be completed at the table. Orientation Program / University academic-social promotion program is organized because of the competitors. An appointment is made for a one-on-one meeting at the unit after the registration of our newly registered disabled student. All kinds of documents proving the disability are our estimated physical and personal expectations from the student to the unit in the near future.

### 4. Academic Regulations:

Bahçeşehir University's general mission is to provide a supportive and well-resourced environment to students with disabilities, to remove the problems in front of their academic development and to help them develop their independence as individuals. Parallel to this mission, the Disabled Student Unit has made every effort to create a safe and accessible academic environment for all students with disabilities and has made it its mission to take the necessary steps to remove the physical and behavioral barriers that limit effective participation at Bahçeşehir University. The unit makes the necessary arrangements and offers solutions to meet the needs of students with disabilities who are enrolled in our university while they continue their education, to identify and eliminate the obstacles they may encounter and the measures to be taken against them.

## REDUCED INEQUALITIES

### Have reasonable accommodation policy or strategy for people with disabilities including adequate funding

According to the “Bahçeşehir University 2021-2022 Academic Year Disabled Student Unit Report”,

Table 2: The budget for Bahçeşehir University Disabled Student Unit

	2020-2021	2021-2022
<b>Total Budget (TL)</b>		
<b>Actual Expenditure (TL)</b>	<b>170.000 TL</b>	<b>195.000 TL</b>
<b>Total Budget / Total Income</b>	<b>0</b>	<b>195.000 TL</b>
<b>Actual Expenditure/ Total Budget</b>	<b>170.000/170.000</b>	<b>195.000/195.000</b>

The annual budget of Bahçeşehir University Disabled Student Unit is 195,000 TL. In the 2021-2022 Academic year, the entire unit budget was used for Kemerburgaz Campus Accessibility arrangements. The total arrangement expenses amounted to 234,868.60 TL, the rest of which was covered by our Secretariat General.

Generally disabled arrangements can be summarized as follows;

First, inside the main campus; In accordance with the standards, dangerous and requiring information (stair start and end, elevator button fronts, emergency exit door fronts, main entrance door fronts) areas can be sensed surface application. Glass tape was applied to the required areas in all blocks. In addition, after the main entrance of the building, information signs for use in the building and in the main entrance hall, Braille alphabet and embossed panels of 120cm - 160cm height are provided for the visually impaired.

Necessary revisions have been made for unobstructed access to the security checkpoints at the building entrances. All blocks were provided with braille printed floor plans and placed in appropriate places. The hall / desk type induction loop system for the hearing impaired is provided for use in information desks, conference rooms and classrooms. In all blocks of the main campus of our university, the door names of all the areas offered to the use of individuals have been rearranged with braille printing. Routing signs from the main entrances to disabled toilets were put. These signs are designed to be Braille printed embossed letters and symbols for the visually impaired. All non-slip tapes made of non-slip material in the wet-dry state on the stair surfaces have been renewed. Braille embossed sheets are added to the stair railings to indicate which line. All ramps that do not comply with the relevant legislation have been renewed. Two climbers have been purchased to be used where the ramp cannot be built as a slope. The elevator entrances are attached to the building entrances. Internal and external control buttons in the elevators have been renewed to be Braille printed and internal and external audible system has been added. The entire university is equipped with audible and visible alarms with audible and illuminated signs.

## REDUCED INEQUALITIES

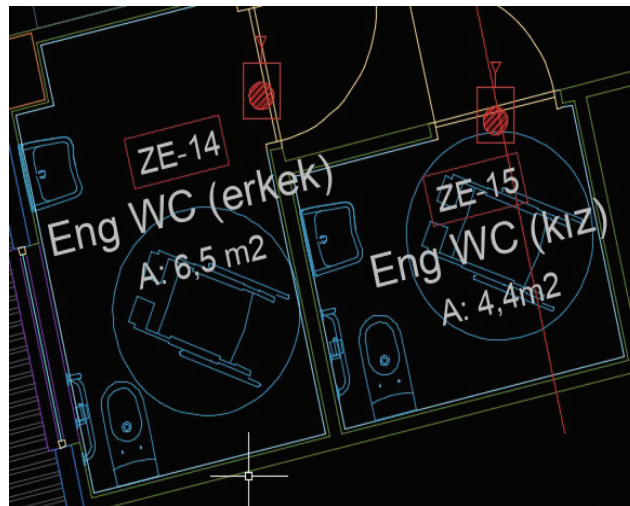
In Kemerburgaz Campus of the Bahçeşehir University, accessibility arrangements were completed under the consultancy of a specialist company. Accessibility studies continue in North and Galata Campuses.

In case of emergency, there should be easily visible light and sound guidance to be directed to the exit. In case of emergency, audible and visible alarm should be positioned. An audible and illuminated emergency exit announcement has been placed at the emergency exits (65 units) in the campus areas.

Photo 4: Audible and illuminated emergency exit announcement placed at the emergency exits in the campus areas



Photo 5: Toilets plans in Kemerburgaz Campus designed in accordance with accessibility legislation for people with disabilities



## REDUCED INEQUALITIES

Photo 6: Toilets designed in accordance with accessibility legislation for people with disabilities in Kemerburgaz Campus



Photo 7: A sensible guide road prepared for disabled people.



## REDUCED INEQUALITIES

Photo 8: The hall / desk type induction loop system for disabled people.

